

Lochside Dr between Royal Oak Dr and Sea Pearl Pl

October 21, 2019 To October 26, 2019



The data presented here is for information purposes only and should not be considered authoritative for construction, geotechnical, engineering, navigational, legal, or other site-specific uses. The information shared is owned by the Transportation Division of the Engineering Department at the District of Saanich. Accuracy is not guaranteed.

Start Date: 21-Oct-19
 Start Time: 0:00
 Station ID: R0675-07

Location 1: Lochside Dr between Royal Oak Dr and Sea Pearl PI

Note:

DATE:	October 21, 2019		October 22, 2019		October 23, 2019		October 24, 2019		October 25, 2019		WK AVG		WK AVG	HOURLY
	MON		TUE		WED		THURS		FRI		NB		CH 1+2	%
Time:	NB	SB	NB	SB	NB	SB	NB	SB	NB	SB	NB	SB		
12-1 AM			1	1	3	3	2	3			2	2	4	0.2%
1-2 AM			0	1	2	0	0	0			1	0	1	0.0%
2-3 AM			0	0	0	1	0	1			0	1	1	0.0%
3-4 AM			0	0	1	1	2	2			1	1	2	0.1%
4-5 AM			1	2	1	2	3	4			2	3	4	0.2%
5-6 AM			2	11	4	6	4	10			3	9	12	0.5%
6-7 AM			7	26	9	27	7	25			8	26	34	1.5%
7-8 AM			40	100	30	101	38	106			36	102	138	6.0%
8-9 AM			69	162	75	161	68	147			71	157	227	9.9%
9-10 AM			34	82	58	94	46	81			46	86	132	5.7%
10-11 AM			49	66	68	70	48	68			55	68	123	5.4%
11-12 PM			66	78	69	96	53	56			63	77	139	6.1%
12-1 PM			64	70	69	82	62	65			65	72	137	6.0%
1-2 PM			63	68	53	70	51	71			56	70	125	5.5%
2-3 PM			93	85	82	107	78	84			84	92	176	7.7%
3-4 PM			115	119	110	121	126	129			117	123	240	10.5%
4-5 PM			122	86	124	93	132	84			126	88	214	9.3%
5-6 PM			121	69	130	80	114	85			122	78	200	8.7%
6-7 PM			60	45	75	54	77	55			71	51	122	5.3%
7-8 PM			28	28	61	49	47	41			45	39	85	3.7%
8-9 PM			38	22	38	32	47	31			41	28	69	3.0%
9-10 PM			23	14	39	49	53	45			38	36	74	3.2%
10-11 PM			10	1	11	9	14	8			12	6	18	0.8%
11-12 AM			8	1	13	1	5	7			9	3	12	0.5%
LANES			1014	1137	1125	1309	1077	1208			1072	1218	2290	100.0%
TOTAL			2151		2434		2285				2290			
	MON		TUE		WED		THURS		FRI		WK AVG			

PEAK HOUR					TOTAL VEHICALS-PEAK PERIODS		2 HOUR PEAK INTERVALS				
MAX. 7 - 9 am PEAK HOUR	227	⇒	9.9%	between 8-9 AM	1056	⇒	6 HR TOTAL	2 HR AM (7 - 9 AM)			
MAX. 7 - 11 am PEAK HOUR	227	⇒	9.9%	between 8-9 AM	779	⇒	4 HR TOTAL	VEH / HR	VEH / 2HR	2 HR %	
MAX. 11 am - 1 pm PEAK HOUR	139	⇒	6.1%	between 11-12 PM				7-8 AM	138	366	16.0%
MAX. 11 am - 3 pm PEAK HOUR	176	⇒	7.7%	between 2-3 PM				8-9 AM	227		
MAX. 4 - 6 pm PEAK HOUR	214	⇒	9.3%	between 4-5 PM				2 HR NOON (11 - 1 PM)			
MAX. 3 - 6 pm PEAK HOUR	240	⇒	10.5%	between 3-4 PM				VEH / HR	VEH / 2HR	2 HR %	
								11-12 PM	139	277	12.1%
								12-1 PM	137		
								2 HR PM (4 - 6 PM)			
								VEH / HR	VEH / 2HR	2 HR %	
								4-5 PM	214	413	18.0%
								5-6 PM	200		

Lochside Dr between Royal Oak Dr and Sea Pearl Pl

Northbound

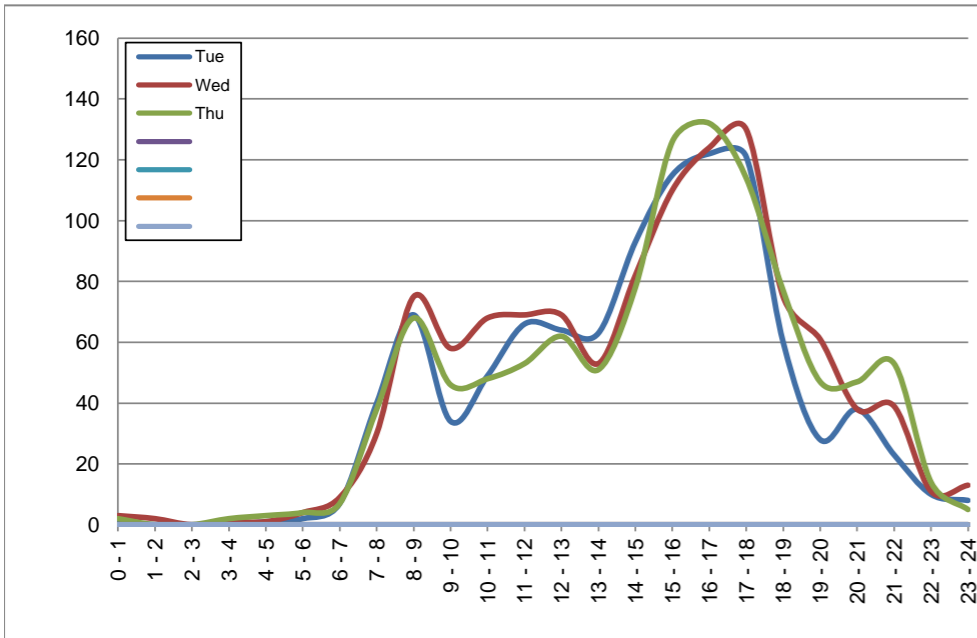
October 22, 2019 to October 24, 2019

Hourly Volumes

Time Period	Tue	Wed	Thu				
	Oct 22	Oct 23	Oct 24				
0 - 1	1	3	2				
1 - 2	0	2	0				
2 - 3	0	0	0				
3 - 4	0	1	2				
4 - 5	1	1	3				
5 - 6	2	4	4				
6 - 7	7	9	7				
7 - 8	40	30	38				
8 - 9	69	75	68				
9 - 10	34	58	46				
10 - 11	49	68	48				
11 - 12	66	69	53				
12 - 13	64	69	62				
13 - 14	63	53	51				
14 - 15	93	82	78				
15 - 16	115	110	126				
16 - 17	122	124	132				
17 - 18	121	130	114				
18 - 19	60	75	77				
19 - 20	28	61	47				
20 - 21	38	38	47				
21 - 22	23	39	53				
22 - 23	10	11	14				
23 - 24	8	13	5				
Day Total	1014	1125	1077				

15-Minute Volumes

Time Start	Tue	Wed	Thu				
	Oct 22	Oct 23	Oct 24				
0:00	0	0	1				
0:15	0	1	1				
0:30	1	0	0				
0:45	0	2	0				
1:00	0	0	0				
1:15	0	0	0				
1:30	0	1	0				
1:45	0	1	0				
2:00	0	0	0				
2:15	0	0	0				
2:30	0	0	0				
2:45	0	0	0				
3:00	0	0	1				
3:15	0	1	0				
3:30	0	0	0				
3:45	0	0	1				
4:00	0	0	1				
4:15	0	1	0				
4:30	1	0	1				
4:45	0	0	1				
5:00	0	0	2				
5:15	1	0	0				
5:30	0	0	0				
5:45	1	4	2				
6:00	2	2	4				
6:15	1	1	0				
6:30	3	2	3				
6:45	1	4	0				
7:00	6	3	5				
7:15	9	9	8				
7:30	8	8	13				
7:45	17	10	12				
8:00	13	18	15				
8:15	13	9	9				
8:30	21	24	21				
8:45	22	24	23				
9:00	11	12	10				
9:15	6	17	9				
9:30	7	13	9				
9:45	10	16	18				
10:00	12	21	9				
10:15	18	14	13				
10:30	10	18	11				
10:45	9	15	15				
11:00	15	19	9				
11:15	15	22	14				
11:30	19	13	15				
11:45	17	15	15				
12:00	13	12	14				
12:15	16	21	12				
12:30	14	20	18				
12:45	21	16	18				
13:00	20	21	8				
13:15	12	11	12				
13:30	17	8	19				
13:45	14	13	12				
14:00	25	15	10				
14:15	17	14	21				
14:30	23	17	18				
14:45	28	36	29				
15:00	23	28	27				
15:15	30	29	29				
15:30	32	34	31				
15:45	30	19	39				
16:00	26	27	29				
16:15	32	29	39				
16:30	37	30	31				
16:45	27	38	33				
17:00	38	40	20				
17:15	33	29	36				
17:30	26	32	32				
17:45	24	29	26				
18:00	27	22	24				
18:15	9	18	26				
18:30	11	18	17				
18:45	13	17	10				
19:00	13	14	9				
19:15	3	18	15				
19:30	5	16	4				
19:45	7	13	19				
20:00	9	12	18				
20:15	13	11	13				
20:30	10	7	8				
20:45	6	8	8				
21:00	7	7	14				
21:15	7	20	17				
21:30	4	6	13				
21:45	5	6	9				
22:00	4	3	6				
22:15	2	4	3				
22:30	3	0	4				
22:45	1	4	1				
23:00	1	7	0				
23:15	3	5	4				
23:30	2	0	1				
23:45	2	1	0				



Site notes:

Lochside Dr between Royal Oak Dr and Sea Pearl Pl

Southbound

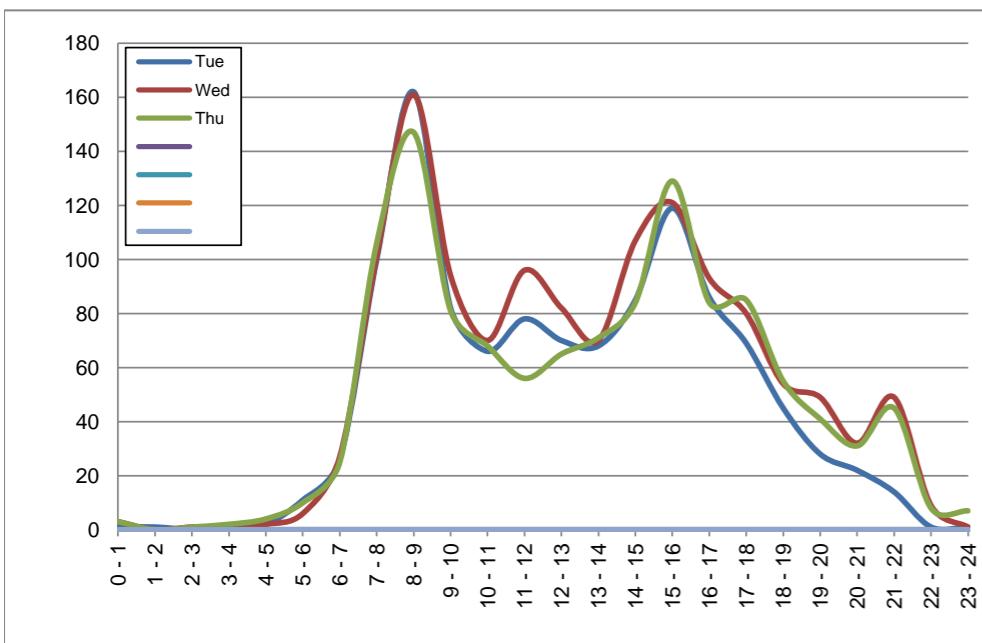
October 22, 2019 to October 24, 2019

Hourly Volumes

Time Period	Tue	Wed	Thu			
	Oct 22	Oct 23	Oct 24			
0 - 1	1	3	3			
1 - 2	1	0	0			
2 - 3	0	1	1			
3 - 4	0	1	2			
4 - 5	2	2	4			
5 - 6	11	6	10			
6 - 7	26	27	25			
7 - 8	100	101	106			
8 - 9	162	161	147			
9 - 10	82	94	81			
10 - 11	66	70	68			
11 - 12	78	96	56			
12 - 13	70	82	65			
13 - 14	68	70	71			
14 - 15	85	107	84			
15 - 16	119	121	129			
16 - 17	86	93	84			
17 - 18	69	80	85			
18 - 19	45	54	55			
19 - 20	28	49	41			
20 - 21	22	32	31			
21 - 22	14	49	45			
22 - 23	1	9	8			
23 - 24	1	1	7			
Day Total	1137	1309	1208			

15-Minute Volumes

Time Start	Tue	Wed	Thu				Time Start	Tue	Wed	Thu			
	Oct 22	Oct 23	Oct 24					Oct 22	Oct 23	Oct 24			
0:00	1	1	3				12:00	16	27	19			
0:15	0	1	0				12:15	19	16	11			
0:30	0	0	0				12:30	22	19	16			
0:45	0	1	0				12:45	13	20	19			
1:00	0	0	0				13:00	23	15	17			
1:15	1	0	0				13:15	14	12	17			
1:30	0	0	0				13:30	13	23	12			
1:45	0	0	0				13:45	18	20	25			
2:00	0	0	0				14:00	19	20	24			
2:15	0	0	0				14:15	23	31	19			
2:30	0	0	1				14:30	26	19	21			
2:45	0	1	0				14:45	17	37	20			
3:00	0	0	0				15:00	14	41	18			
3:15	0	0	0				15:15	16	31	19			
3:30	0	1	2				15:30	52	24	60			
3:45	0	0	0				15:45	37	25	32			
4:00	0	1	2				16:00	17	21	18			
4:15	1	1	0				16:15	24	21	20			
4:30	1	0	0				16:30	24	27	18			
4:45	0	0	2				16:45	21	24	28			
5:00	5	3	1				17:00	24	23	23			
5:15	1	0	3				17:15	14	20	26			
5:30	1	0	1				17:30	18	15	19			
5:45	4	3	5				17:45	13	22	17			
6:00	4	2	2				18:00	13	12	10			
6:15	3	4	3				18:15	16	19	14			
6:30	8	10	12				18:30	8	15	14			
6:45	11	11	8				18:45	8	8	17			
7:00	10	14	14				19:00	6	11	13			
7:15	16	17	20				19:15	11	16	10			
7:30	42	34	35				19:30	6	13	8			
7:45	32	36	37				19:45	5	9	10			
8:00	28	38	43				20:00	7	4	9			
8:15	44	32	34				20:15	5	13	7			
8:30	47	44	30				20:30	5	8	5			
8:45	43	47	40				20:45	5	7	10			
9:00	30	33	28				21:00	6	15	13			
9:15	22	20	16				21:15	2	14	14			
9:30	13	21	20				21:30	3	16	15			
9:45	17	20	17				21:45	3	4	3			
10:00	24	17	18				22:00	1	3	4			
10:15	14	17	13				22:15	0	4	2			
10:30	12	19	19				22:30	0	1	0			
10:45	16	17	18				22:45	0	1	2			
11:00	10	19	12				23:00	1	0	2			
11:15	17	28	15				23:15	0	0	2			
11:30	27	22	18				23:30	0	0	0			
11:45	24	27	11				23:45	0	1	3			



Site notes:

Vehicle Speed Summary

Saanich Engineering Department

Count Id: [R0675-07](#)

Filename: [Lochside Dr between Royal Oak Dr and Sea Pearl Pl-Oct-2019.xlsm](#)

Location: Lochside Dr between Royal Oak Dr and Sea Pearl Pl

Note:

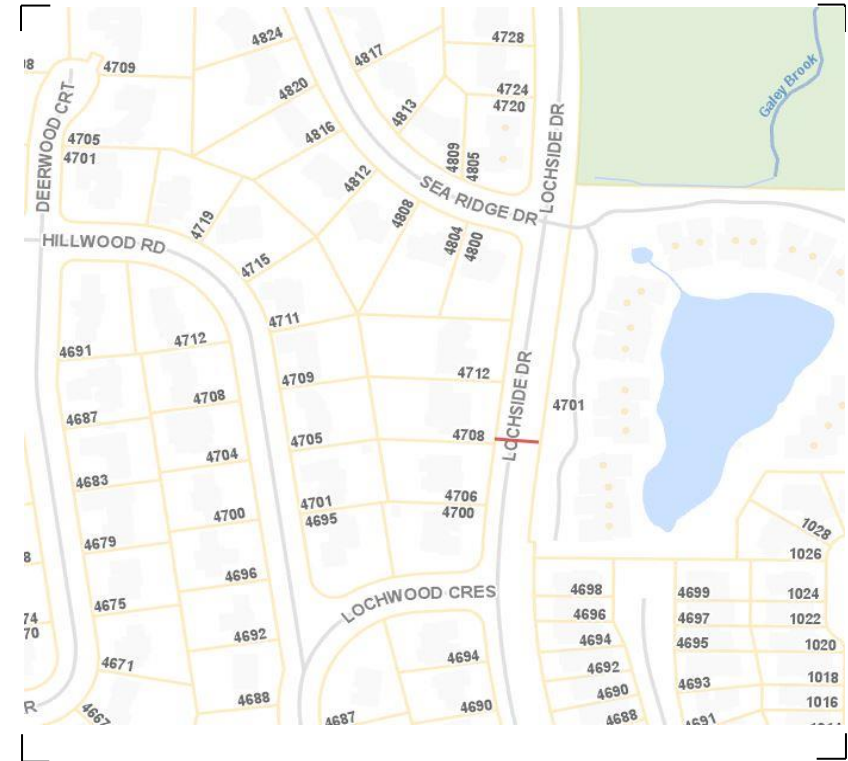
Direction: **North-South**

Dates: **October 21, 2019 To October 26, 2019**

Filtered data

AVG. SPEED	24 mph	39 km/h
50 % SPEED	25 mph	40 km/h
85 % SPEED	30 mph	49 km/h
95 % SPEED	33 mph	53 km/h

Location Map



Lochside Dr between Royal Oak Dr and Sea Pearl Pl

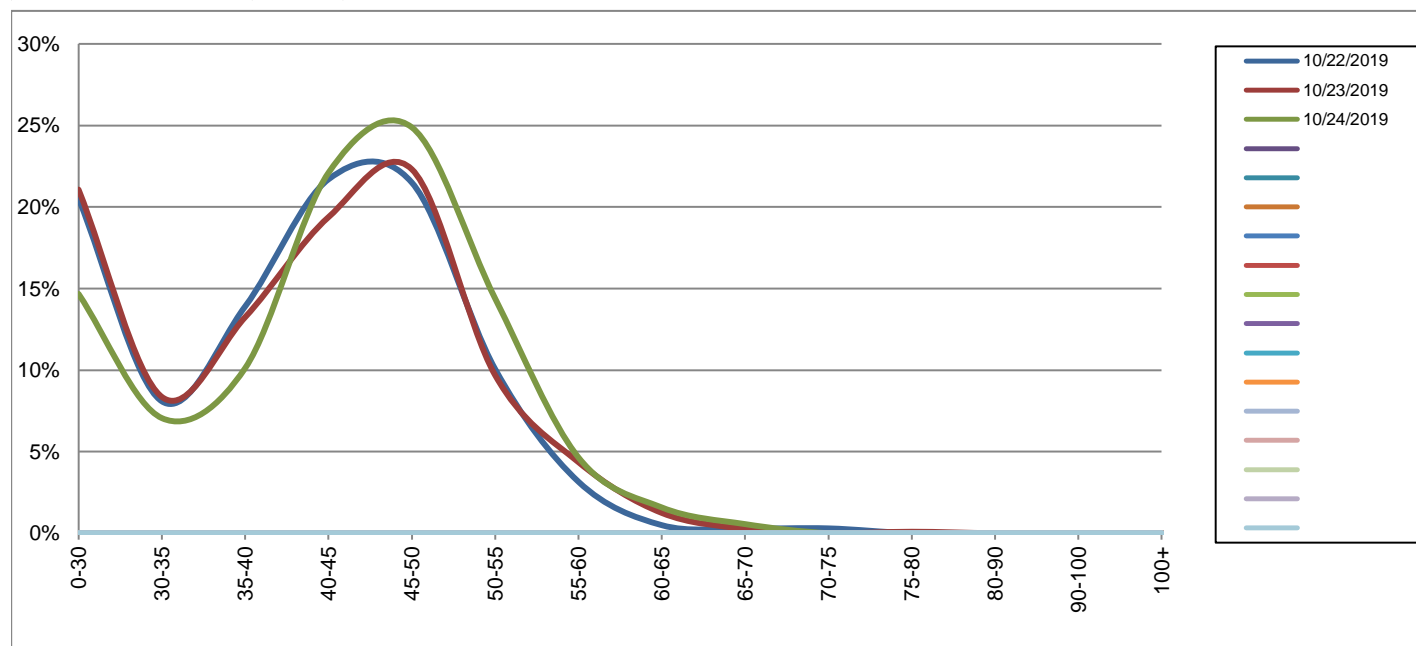
Northbound

October 22, 2019 to October 24, 2019

Daily Speed Bin Percentages															Daily Speed Bin Volumes														Total	Avg.
Bin #	1	2	3	4	5	6	7	8	9	10	11	12	13	14	1	2	3	4	5	6	7	8	9	10	11	12	13	14	Volume	Speed
Bin Speeds	0-30	30-35	35-40	40-45	45-50	50-55	55-60	60-65	65-70	70-75	75-80	80-90	90-100	100+	0-30	30-35	35-40	40-45	45-50	50-55	55-60	60-65	65-70	70-75	75-80	80-90	90-100	100+		
10/22/2019	20.5%	8.1%	13.9%	21.7%	21.5%	10.1%	3.2%	0.5%	0.3%	0.3%	0.0%	0.0%	0.0%	0.0%	208	82	141	220	218	102	32	5	3	3	0	0	0	0	1014	38
10/23/2019	21.1%	8.4%	13.2%	19.4%	22.3%	9.7%	4.4%	1.2%	0.3%	0.0%	0.1%	0.0%	0.0%	0.0%	237	94	149	218	251	109	49	14	3	0	1	0	0	0	1125	38
10/24/2019	14.7%	7.1%	10.1%	22.1%	24.9%	14.4%	4.6%	1.6%	0.6%	0.0%	0.0%	0.0%	0.0%	0.0%	158	76	109	238	268	155	50	17	6	0	0	0	0	0	1077	41
Total	18.8%	7.8%	12.4%	21.0%	22.9%	11.4%	4.1%	1.1%	0.4%	0.1%	0.0%	0.0%	0.0%	0.0%	603	252	399	676	737	366	131	36	12	3	1	0	0	0	3216	39

Speed Data Summary

Bin #	1	2	3	4	5	6	7	8	9	10	11	12	13	14	Total
Bin Speeds	0-30	30-35	35-40	40-45	45-50	50-55	55-60	60-65	65-70	70-75	75-80	80-90	90-100	100+	
Survey Total	603	252	399	676	737	366	131	36	12	3	1	0	0	0	3216
% Total	18.8%	7.8%	12.4%	21.0%	22.9%	11.4%	4.1%	1.1%	0.4%	0.1%	0.0%	0.0%	0.0%	0.0%	100%
Accumulated %	18.8%	26.6%	39.0%	60.0%	82.9%	94.3%	98.4%	99.5%	99.9%	100.0%	100.0%	100.0%	100.0%	100%	
Inverse Accum. %	81.3%	73.4%	61.0%	40.0%	17.1%	5.7%	1.6%	0.5%	0.1%	0.0%	0.0%	0.0%	0.0%	0.0%	
Average Speed	39 KM/H														



Site notes:

Lochside Dr between Royal Oak Dr and Sea Pearl Pl

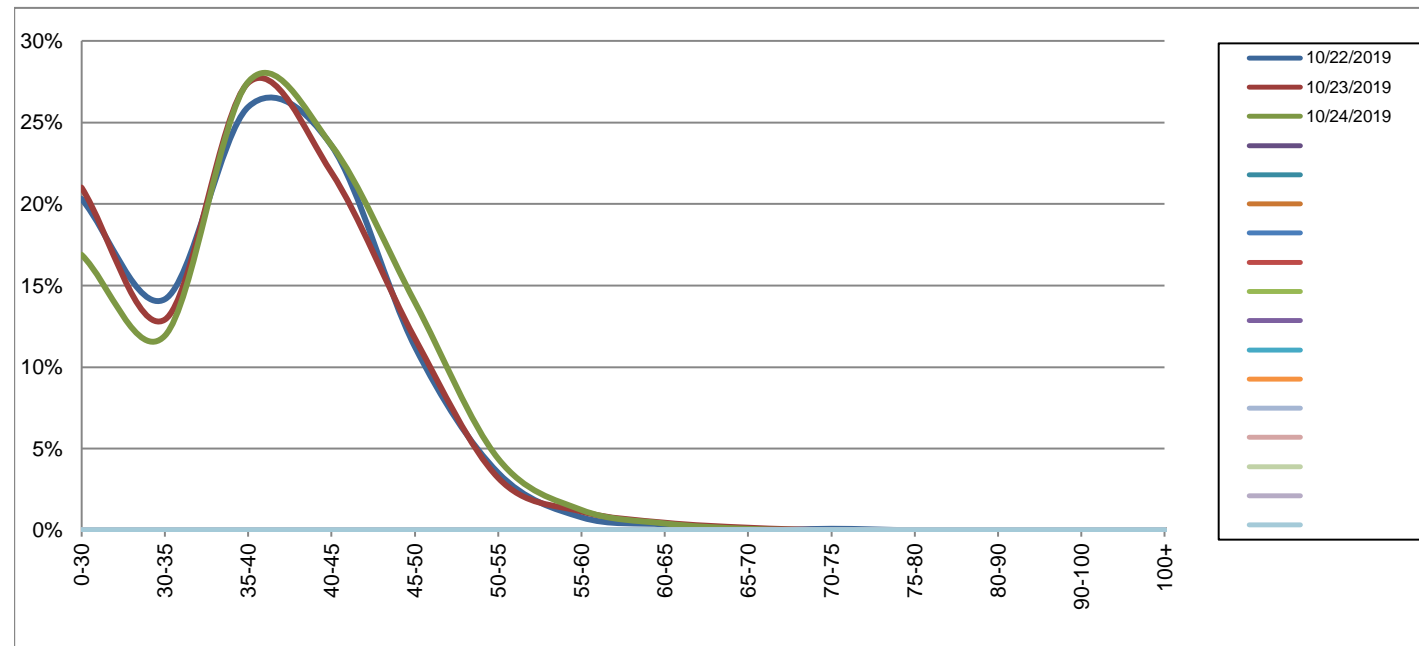
Southbound

October 22, 2019 to October 24, 2019

Daily Speed Bin Percentages															Daily Speed Bin Volumes														Total	Avg.
Bin #	1	2	3	4	5	6	7	8	9	10	11	12	13	14	1	2	3	4	5	6	7	8	9	10	11	12	13	14	Volume	Speed
Bin Speeds	0-30	30-35	35-40	40-45	45-50	50-55	55-60	60-65	65-70	70-75	75-80	80-90	90-100	100+	0-30	30-35	35-40	40-45	45-50	50-55	55-60	60-65	65-70	70-75	75-80	80-90	90-100	100+		
10/22/2019	20.3%	14.2%	25.9%	23.6%	11.3%	3.5%	0.8%	0.4%	0.0%	0.1%	0.0%	0.0%	0.0%	0.0%	231	161	295	268	128	40	9	4	0	1	0	0	0	0	1137	35
10/23/2019	21.0%	12.9%	27.4%	21.9%	11.8%	3.2%	1.1%	0.5%	0.2%	0.0%	0.0%	0.0%	0.0%	0.0%	275	169	359	287	154	42	15	6	2	0	0	0	0	0	1309	35
10/24/2019	16.9%	11.9%	27.5%	23.6%	14.0%	4.4%	1.2%	0.4%	0.1%	0.0%	0.0%	0.0%	0.0%	0.0%	204	144	332	285	169	53	15	5	1	0	0	0	0	0	1208	37
Total	19.4%	13.0%	27.0%	23.0%	12.3%	3.7%	1.1%	0.4%	0.1%	0.0%	0.0%	0.0%	0.0%	0.0%	710	474	986	840	451	135	39	15	3	1	0	0	0	0	3654	36

Speed Data Summary

Bin #	1	2	3	4	5	6	7	8	9	10	11	12	13	14	Total
Bin Speeds	0-30	30-35	35-40	40-45	45-50	50-55	55-60	60-65	65-70	70-75	75-80	80-90	90-100	100+	
Survey Total	710	474	986	840	451	135	39	15	3	1	0	0	0	0	3654
% Total	19.4%	13.0%	27.0%	23.0%	12.3%	3.7%	1.1%	0.4%	0.1%	0.0%	0.0%	0.0%	0.0%	0.0%	100%
Accumulated %	19.4%	32.4%	59.4%	82.4%	94.7%	98.4%	99.5%	99.9%	100.0%	100.0%	100.0%	100.0%	100.0%	100%	
Inverse Accum. %	80.6%	67.6%	40.6%	17.6%	5.3%	1.6%	0.5%	0.1%	0.0%	0.0%	0.0%	0.0%	0.0%	0.0%	
Average Speed	36 KM/H														



Site notes:

Lochside Dr between Royal Oak Dr and Sea Pearl PI

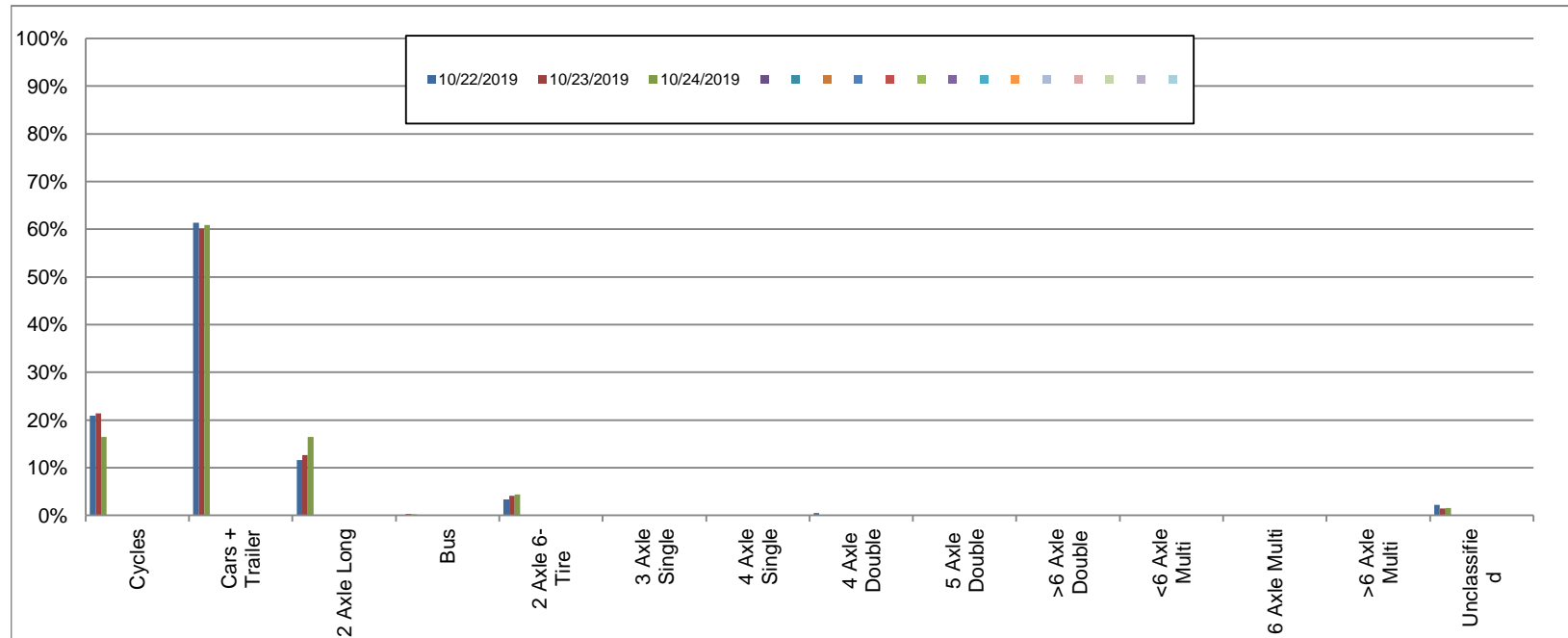
Northbound

October 22, 2019 to October 24, 2019

Daily Class Bin Percentages															Daily Class Bin Volumes											Total Volume				
Bin #	1	2	3	4	5	6	7	8	9	10	11	12	13	14	1	2	3	4	5	6	7	8	9	10	11		12	13	14	
Bin Class	Cycles	Cars + Trailer	2 Axle Long	Bus	2 Axle 6-Tire	3 Axle Single	4 Axle Single	4 Axle Double	5 Axle Double	>6 Axle Double	<6 Axle Multi	6 Axle Multi	>6 Axle Multi	Unclassified	Cycles	Cars + Trailer	2 Axle Long	Bus	2 Axle 6-Tire	3 Axle Single	4 Axle Single	4 Axle Double	5 Axle Double	>6 Axle Double	<6 Axle Multi	6 Axle Multi	>6 Axle Multi	Unclassified		
10/22/2019	20.9%	61.3%	11.6%	0.1%	3.4%	0.0%	0.0%	0.5%	0.0%	0.0%	0.0%	0.0%	0.0%	2.2%	212	622	118	1	34	0	0	5	0	0	0	0	0	0	22	1014
10/23/2019	21.4%	60.1%	12.6%	0.3%	4.1%	0.0%	0.0%	0.1%	0.0%	0.0%	0.0%	0.0%	0.0%	1.4%	241	676	142	3	46	0	0	1	0	0	0	0	0	0	16	1125
10/24/2019	16.4%	60.9%	16.4%	0.2%	4.4%	0.0%	0.0%	0.1%	0.0%	0.0%	0.0%	0.0%	0.0%	1.6%	177	656	177	2	47	0	0	1	0	0	0	0	0	0	17	1077
Total	19.6%	60.8%	13.6%	0.2%	3.9%	0.0%	0.0%	0.2%	0.0%	0.0%	0.0%	0.0%	0.0%	1.7%	630	1954	437	6	127	0	0	7	0	0	0	0	0	55	3216	

Class Data Summary

Bin #	1	2	3	4	5	6	7	8	9	10	11	12	13	14	Total Volume
Bin Class	Cycles	Cars + Trailer	2 Axle Long	Bus	2 Axle 6-Tire	3 Axle Single	4 Axle Single	4 Axle Double	5 Axle Double	>6 Axle Double	<6 Axle Multi	6 Axle Multi	>6 Axle Multi	Unclassified	Total Volume
Survey Total	630	1954	437	6	127	0	0	7	0	0	0	0	0	55	3216
% Total	19.6%	60.8%	13.6%	0.2%	3.9%	0.0%	0.0%	0.2%	0.0%	0.0%	0.0%	0.0%	0.0%	1.7%	100%
Accumulated %	19.6%	80.3%	93.9%	94.1%	98.1%	98.1%	98.1%	98.3%	98.3%	98.3%	98.3%	98.3%	98.3%	100.0%	
Inv. Accum. %	80.4%	19.7%	6.1%	5.9%	1.9%	1.9%	1.9%	1.7%	1.7%	1.7%	1.7%	1.7%	1.7%	0.0%	



Classification Descriptions

Bin #	Bin Description
1	Motorcycles
2	Passenger cars, including those with recreational trailers
3	2-axle pick-ups, vans, and RVs, including those with recreational trailers
4	Buses
5	2-axle, 6-tire single units
6	3-axle single units
7	4-axle single units
8	3-axle or 4-axle double unit
9	5-axle double unit
10	6-, 7-, or 8-axle double unit
11	5-axle multiple unit
12	6-axle multiple unit
13	7-or-more-axle multiple unit
14	Vehicles that could not be classified

Site notes:

Lochside Dr between Royal Oak Dr and Sea Pearl PI

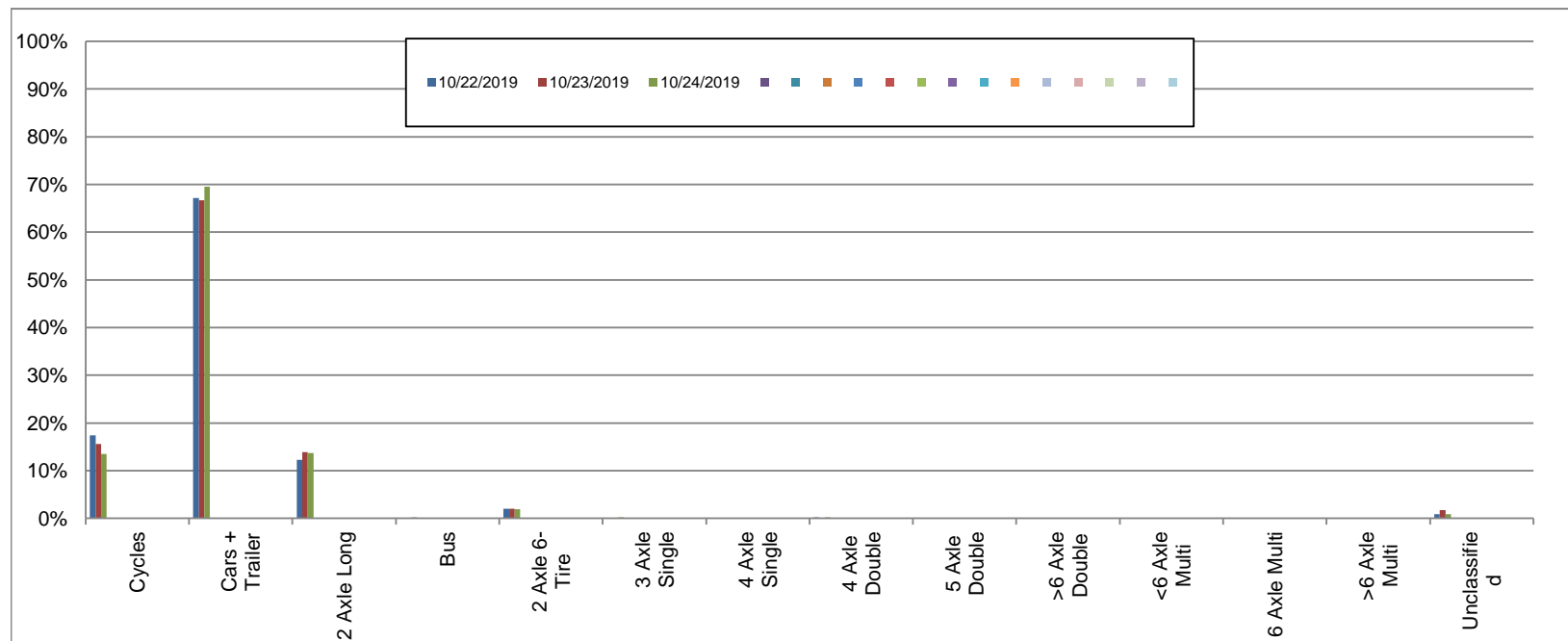
Southbound

October 22, 2019 to October 24, 2019

Daily Class Bin Percentages															Daily Class Bin Volumes											Total Volume				
Bin #	1	2	3	4	5	6	7	8	9	10	11	12	13	14	1	2	3	4	5	6	7	8	9	10	11		12	13	14	
Bin Class	Cycles	Cars + Trailer	2 Axle Long	Bus	2 Axle 6-Tire	3 Axle Single	4 Axle Single	4 Axle Double	5 Axle Double	>6 Axle Double	<6 Axle Multi	6 Axle Multi	>6 Axle Multi	Unclassified	Cycles	Cars + Trailer	2 Axle Long	Bus	2 Axle 6-Tire	3 Axle Single	4 Axle Single	4 Axle Double	5 Axle Double	>6 Axle Double	<6 Axle Multi	6 Axle Multi	>6 Axle Multi	Unclassified		
10/22/2019	17.4%	67.2%	12.2%	0.1%	2.0%	0.0%	0.0%	0.2%	0.0%	0.0%	0.0%	0.0%	0.0%	0.9%	198	764	139	1	23	0	0	2	0	0	0	0	0	0	10	1137
10/23/2019	15.6%	66.7%	13.9%	0.1%	2.0%	0.0%	0.0%	0.0%	0.0%	0.0%	0.0%	0.0%	0.0%	1.8%	204	873	182	1	26	0	0	0	0	0	0	0	0	0	23	1309
10/24/2019	13.5%	69.5%	13.7%	0.2%	1.9%	0.2%	0.0%	0.2%	0.0%	0.0%	0.0%	0.0%	0.0%	0.9%	163	840	165	2	23	2	0	2	0	0	0	0	0	0	11	1208
Total	15.5%	67.8%	13.3%	0.1%	2.0%	0.1%	0.0%	0.1%	0.0%	0.0%	0.0%	0.0%	0.0%	1.2%	565	2477	486	4	72	2	0	4	0	0	0	0	0	44	3654	

Class Data Summary

Bin #	1	2	3	4	5	6	7	8	9	10	11	12	13	14	Total Volume
Bin Class	Cycles	Cars + Trailer	2 Axle Long	Bus	2 Axle 6-Tire	3 Axle Single	4 Axle Single	4 Axle Double	5 Axle Double	>6 Axle Double	<6 Axle Multi	6 Axle Multi	>6 Axle Multi	Unclassified	Total Volume
Survey Total	565	2477	486	4	72	2	0	4	0	0	0	0	0	44	3654
% Total	15.5%	67.8%	13.3%	0.1%	2.0%	0.1%	0.0%	0.1%	0.0%	0.0%	0.0%	0.0%	0.0%	1.2%	100%
Accumulated %	15.5%	83.3%	96.6%	96.7%	98.6%	98.7%	98.7%	98.8%	98.8%	98.8%	98.8%	98.8%	98.8%	100.0%	
Inv. Accum. %	84.5%	16.7%	3.4%	3.3%	1.4%	1.3%	1.3%	1.2%	1.2%	1.2%	1.2%	1.2%	1.2%	0.0%	



Classification Descriptions

Bin #	Bin Description
1	Motorcycles
2	Passenger cars, including those with recreational trailers
3	2-axle pick-ups, vans, and RVs, including those with recreational trailers
4	Buses
5	2-axle, 6-tire single units
6	3-axle single units
7	4-axle single units
8	3-axle or 4-axle double unit
9	5-axle double unit
10	6-, 7-, or 8-axle double unit
11	5-axle multiple unit
12	6-axle multiple unit
13	7-or-more-axle multiple unit
14	Vehicles that could not be classified

Site notes: